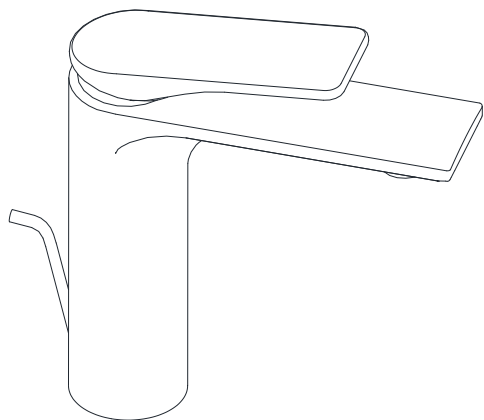
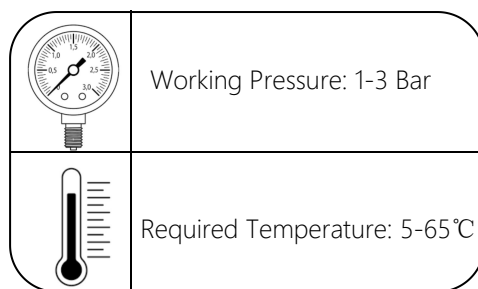




## LAG-91051B

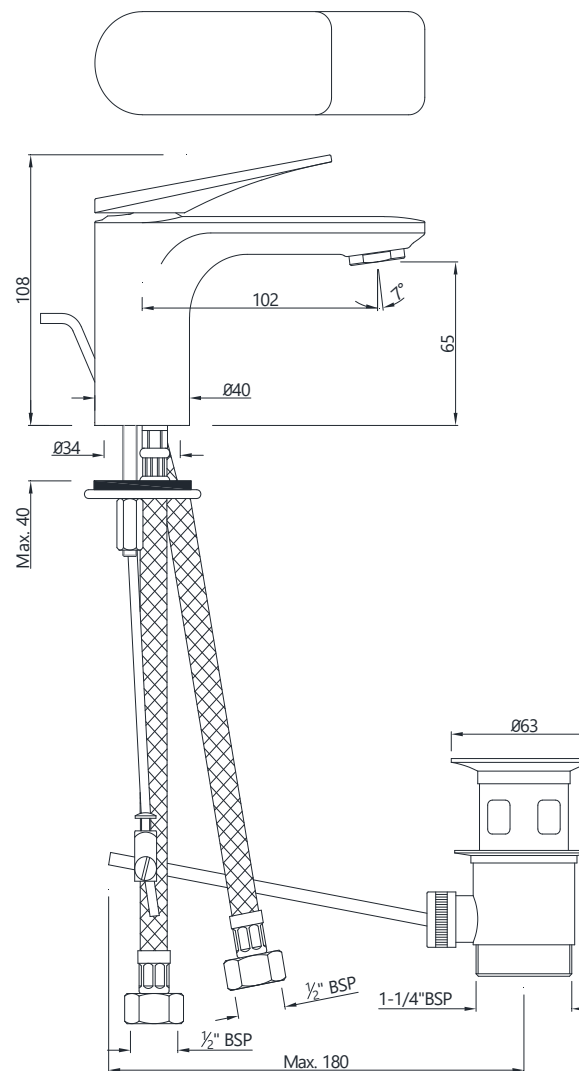


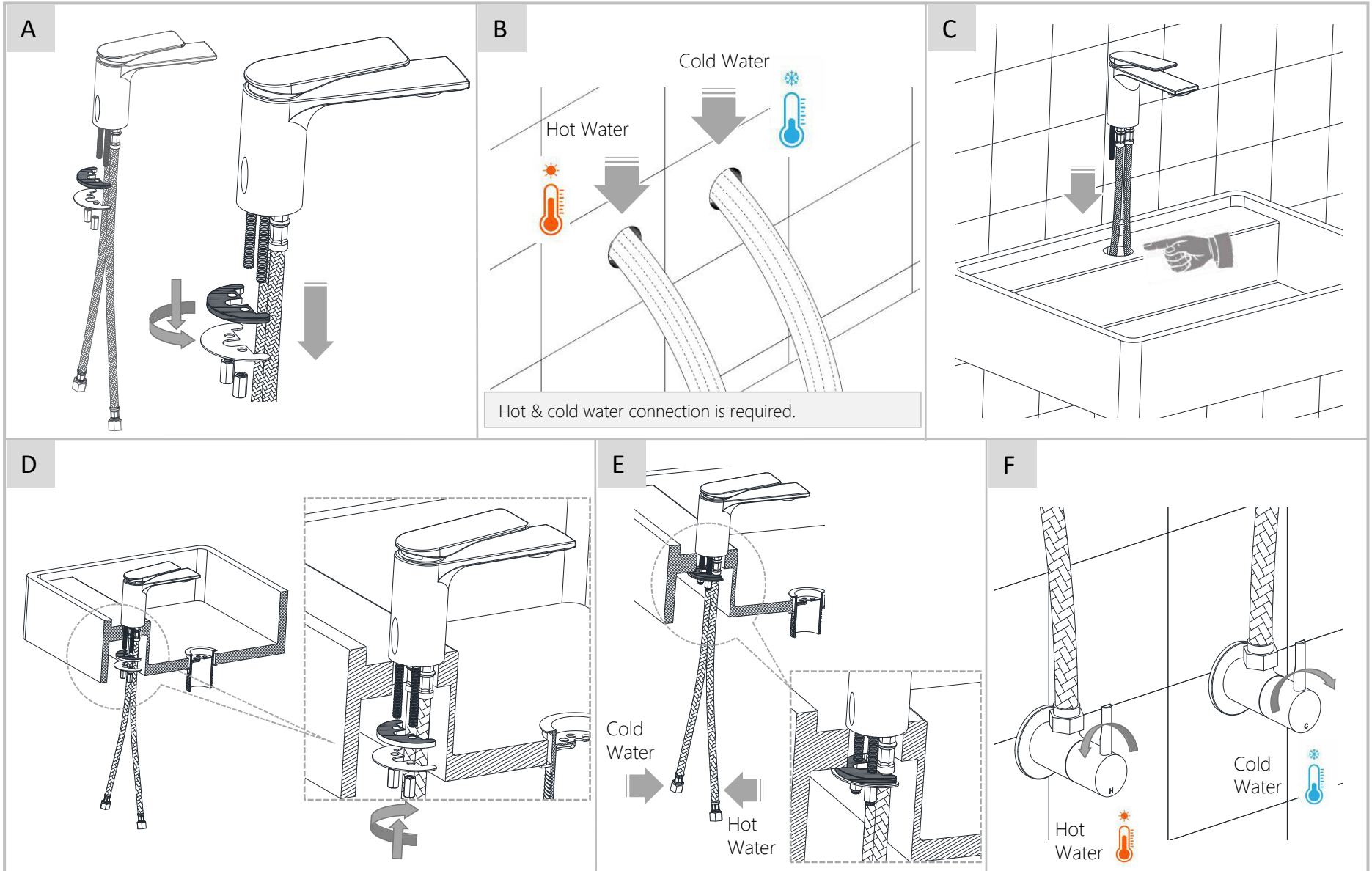
## TEMP.&amp; WATER PRESSURE REQUIREMENTS



Note: Above values are the recommended values for Getting Conventional Outputs.

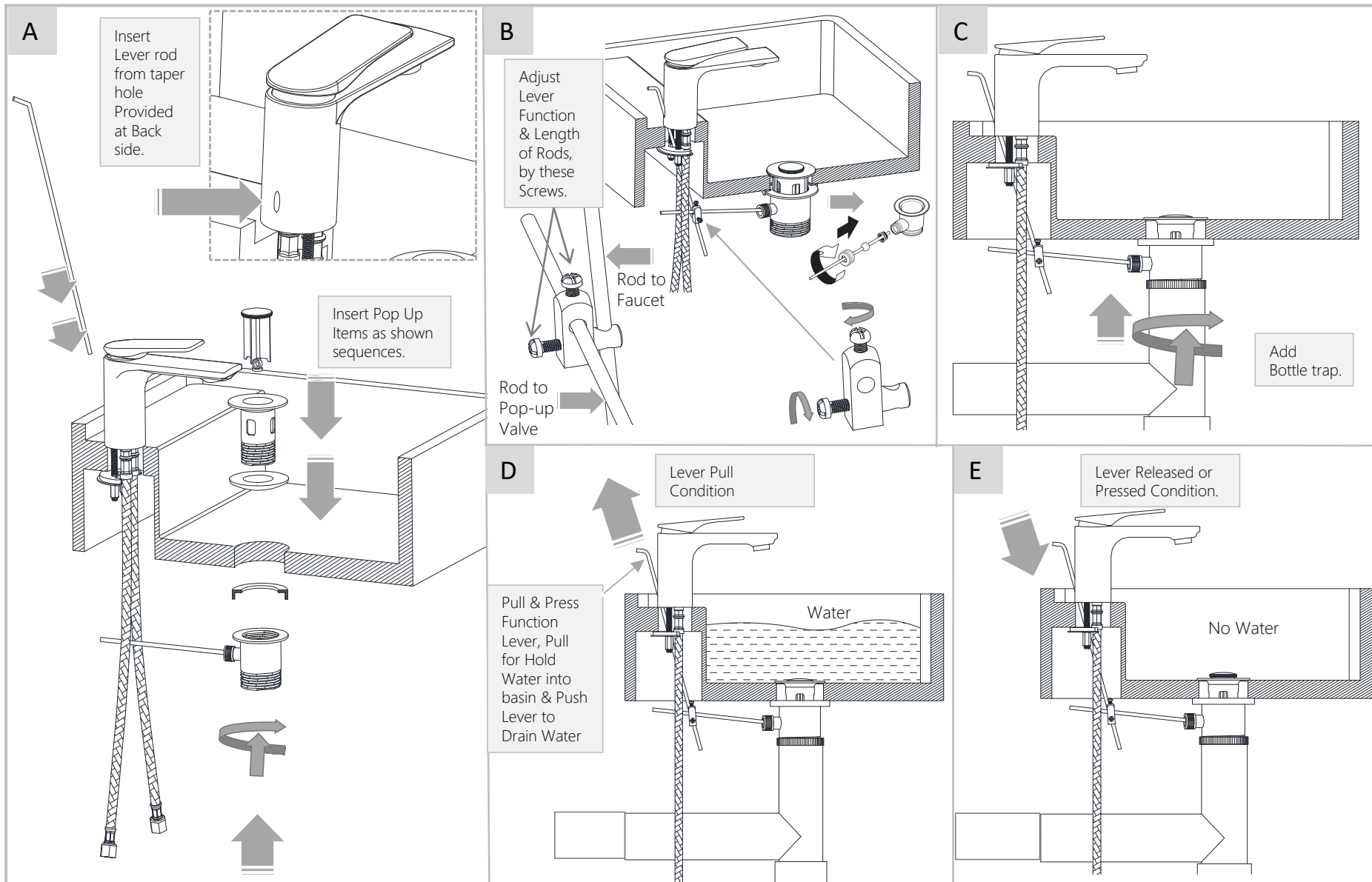
## TECHNICAL DRAWING



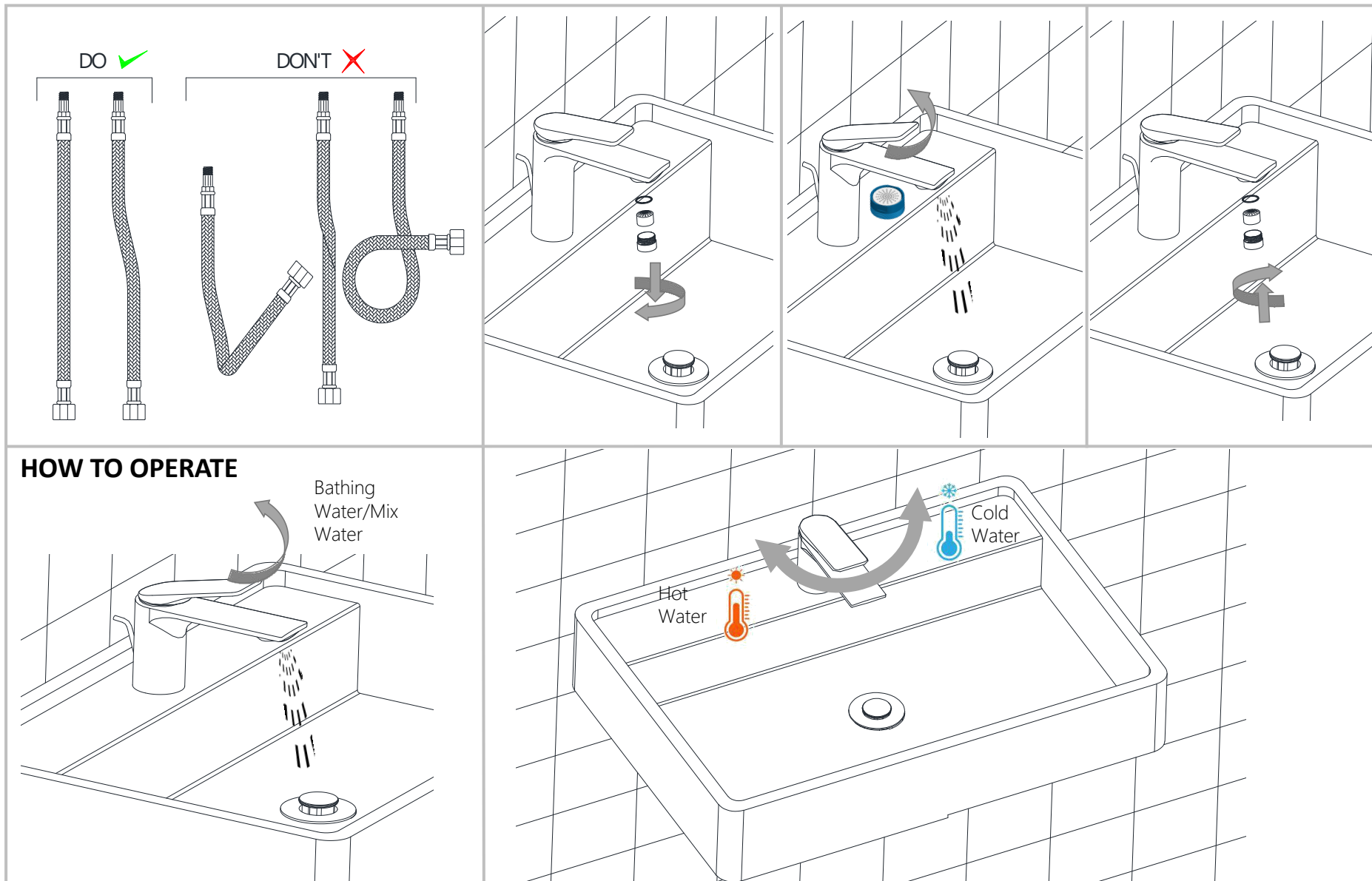


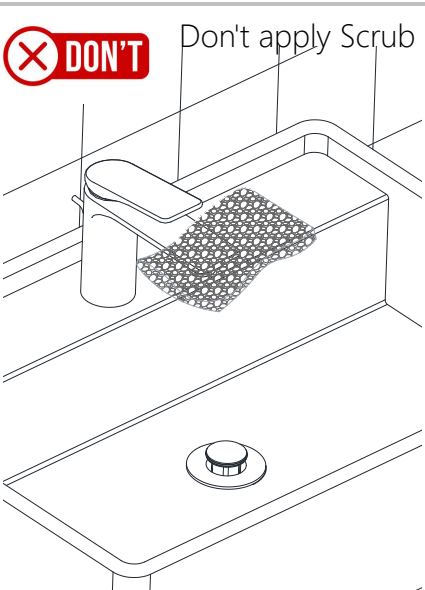
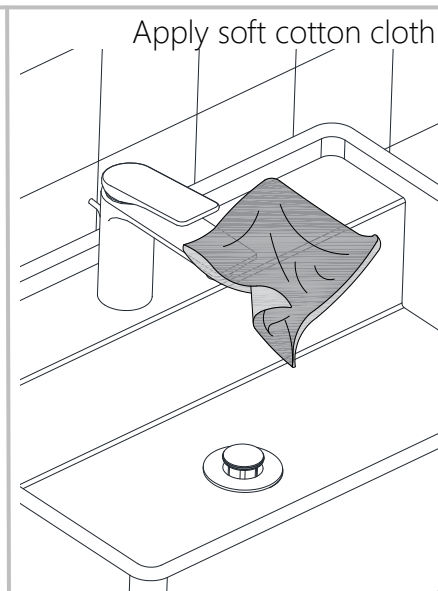
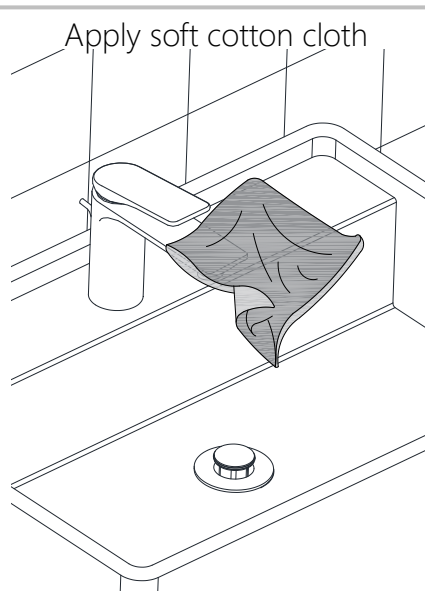
Note: This Installation Method is applicable for Single Lever Basin Mixer without Popup Waste.

# Adding Pop-up Lever



Note: This Installation Method is applicable for Single Lever Basin Mixer with Pop-up Waste.





Steps & Cleaning agents requirements for Aerator Cleaning.

