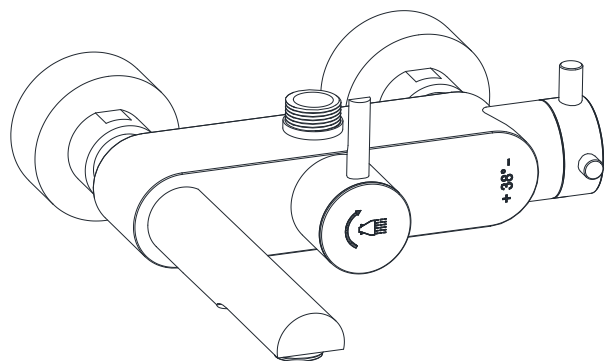
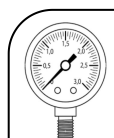




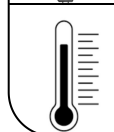
FLP-5615PM



TEMP. & WATER PRESSURE REQUIREMENTS



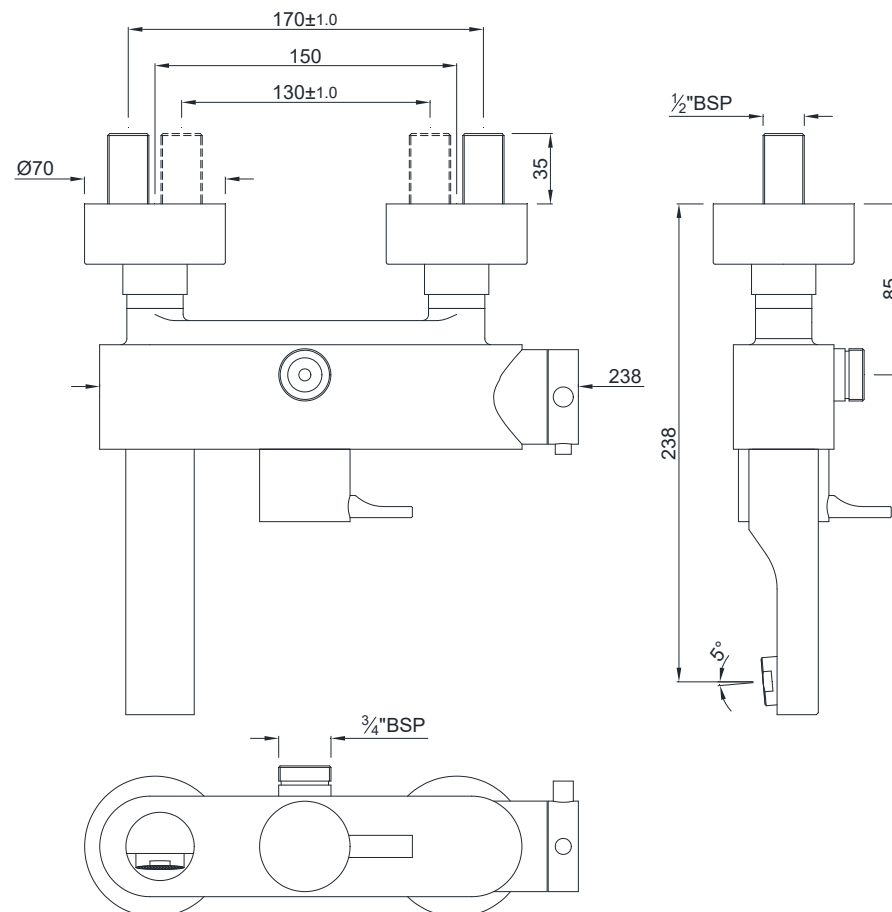
Working Pressure: 1~3 bar

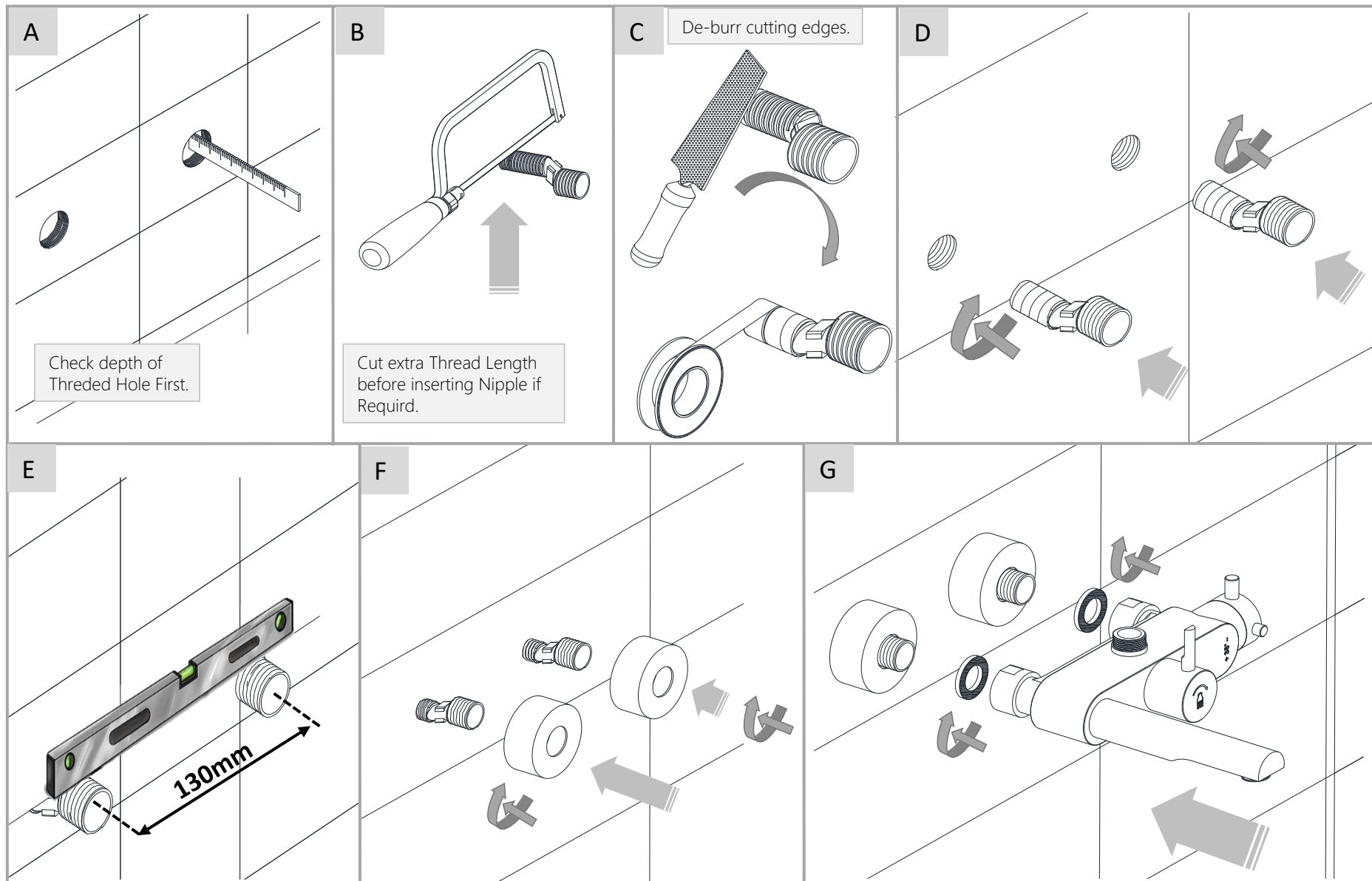


Required Temperature: 5-65°C

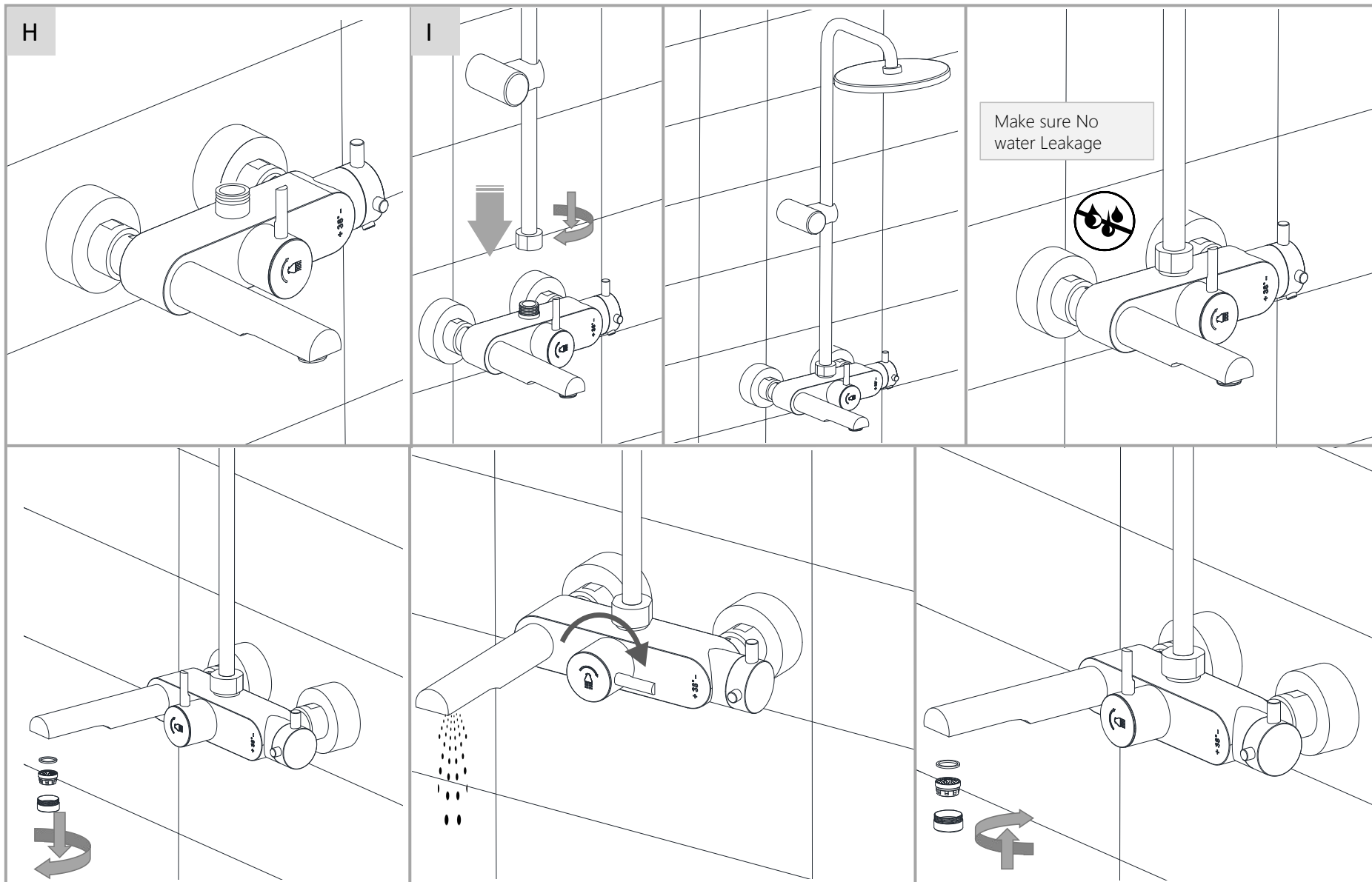
Note: Above are the recommended values for getting Conventional Output.

TECHNICAL DRAWING

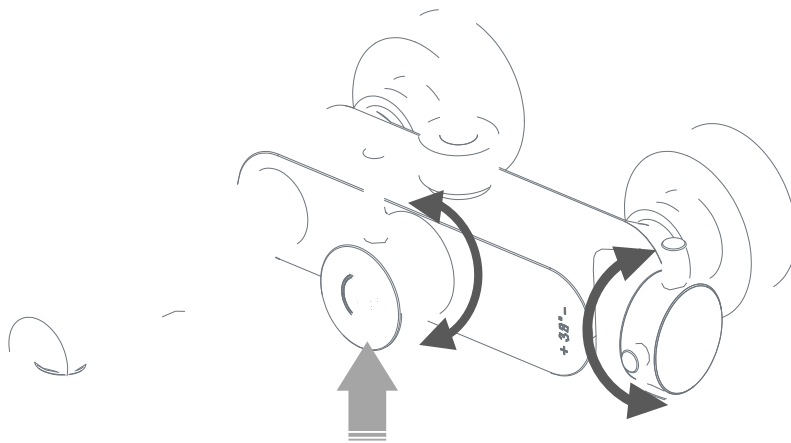




HOW TO INSTALL



MULTI FUNCTION KNOB & SAFETY FEATURE

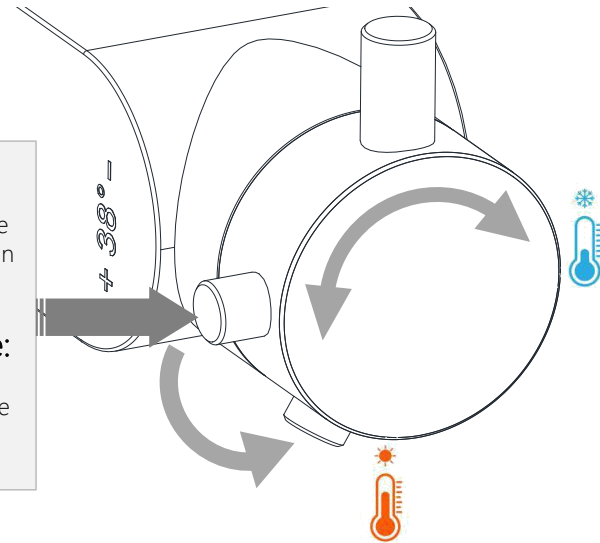


Multi Function Knob, for divert water into Spout & over Head Shower.

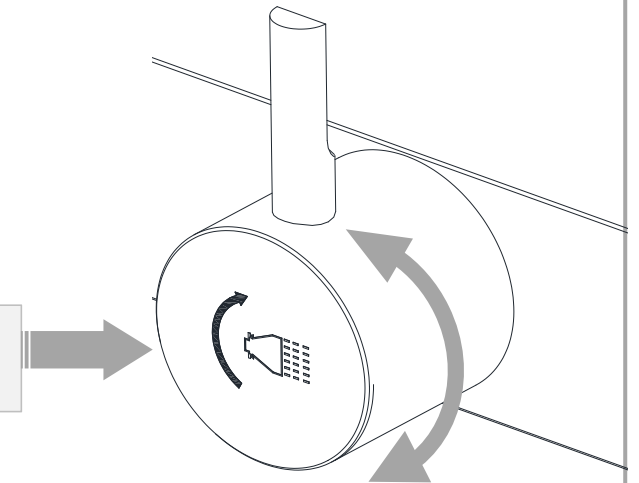
Safety Feature+Additional Temperature feature.

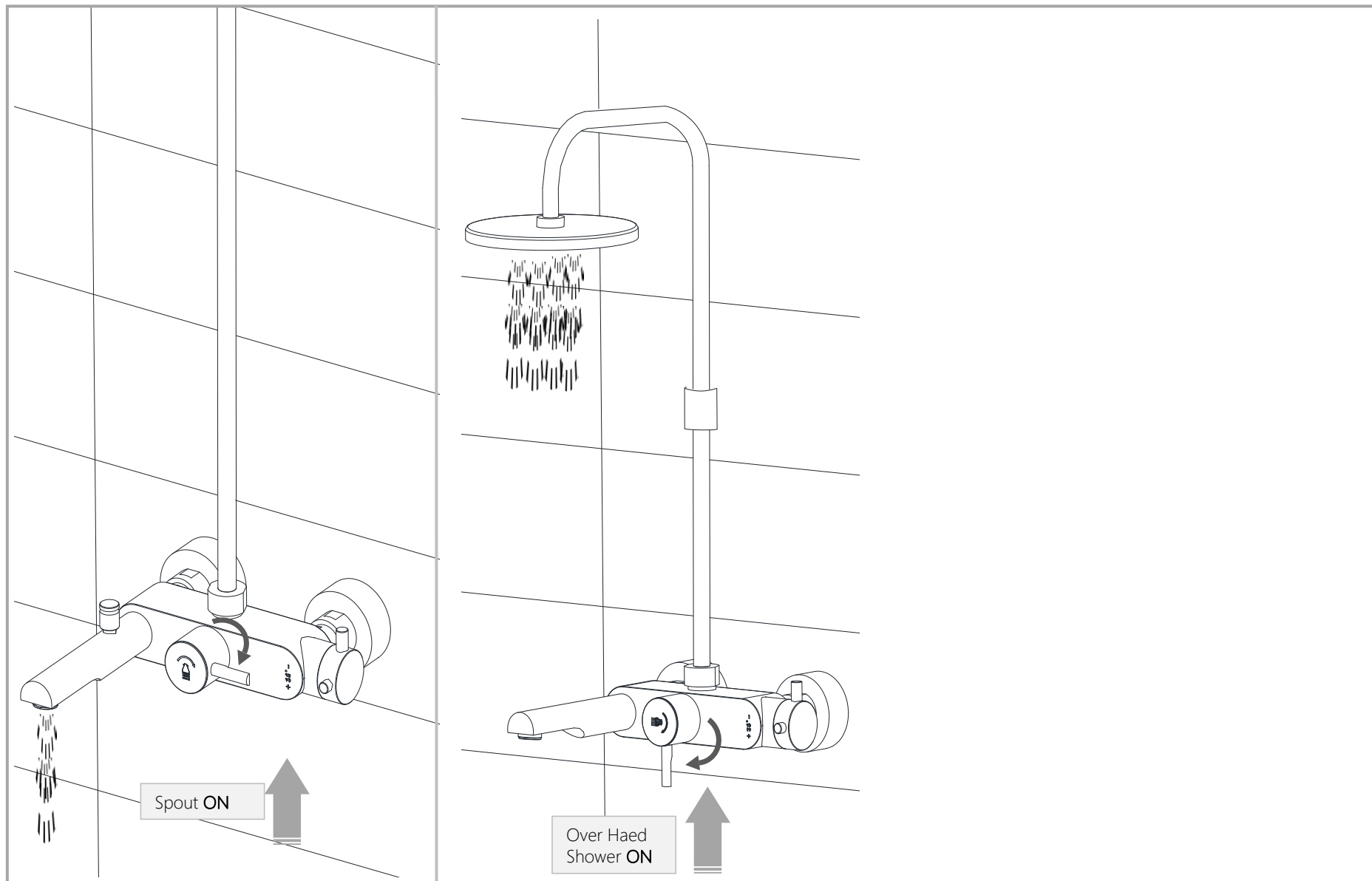
Press+Rotate & Release button if Water Temperature required more than 38°

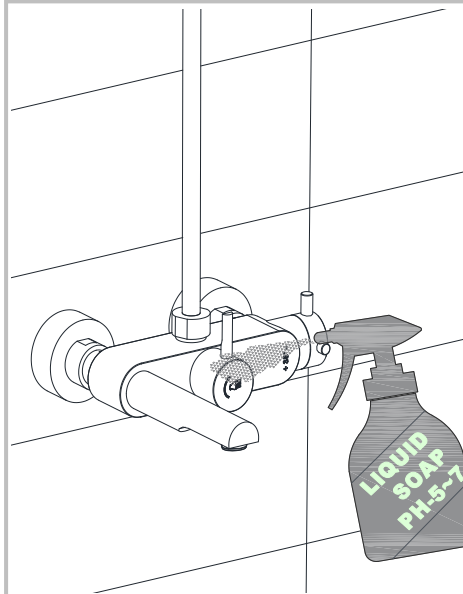
Safety feature:
Standard/ default Water temperature will not exceed more that 38°



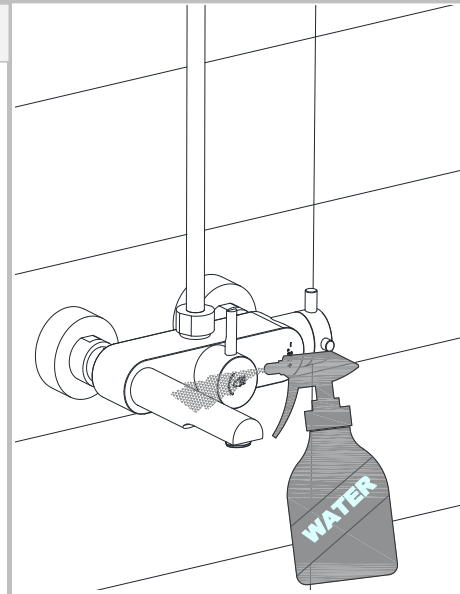
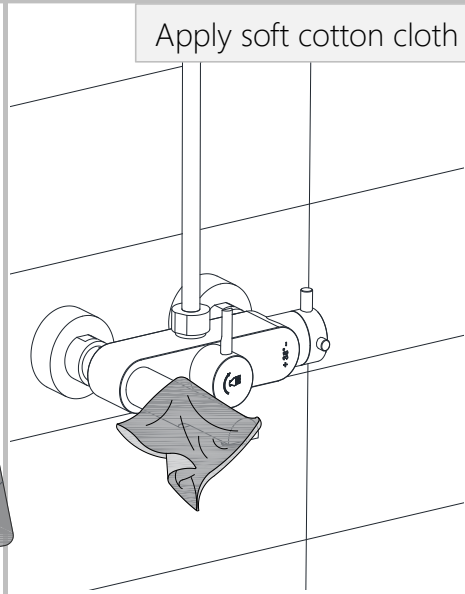
Multi Function Knob, for divert water into Spout & over Head Shower.



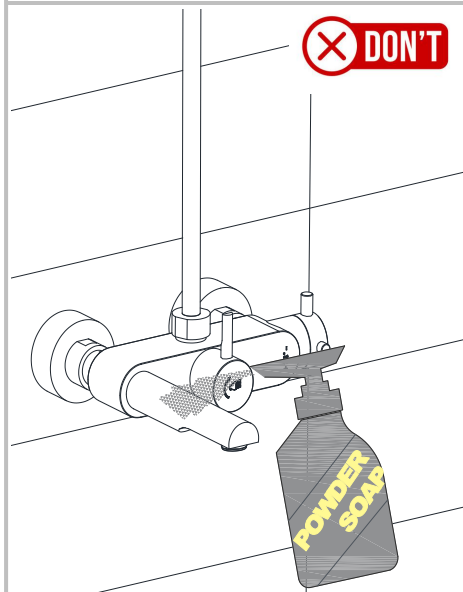
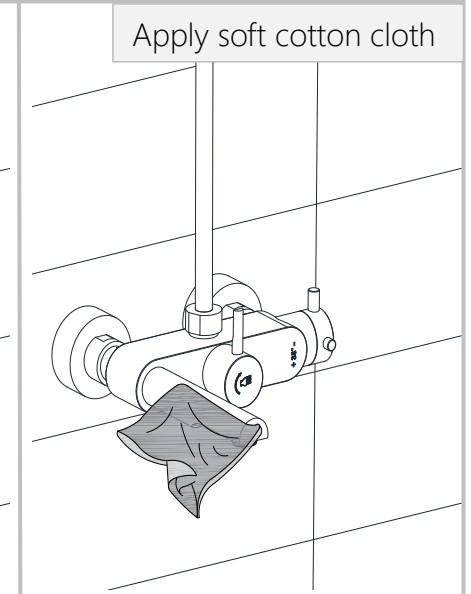




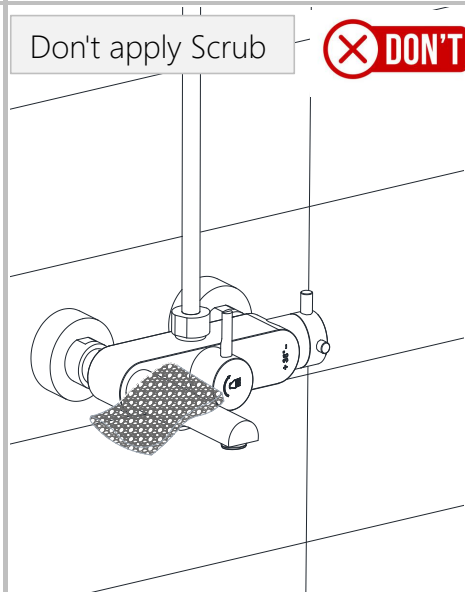
Apply soft cotton cloth



Apply soft cotton cloth



Don't apply Scrub



Steps & Cleaning agents requirements for Aerator Cleaning.

